



ENVIROLUX  
2013 PRODUCT CATALOGUE

# CUSTOM BUILT



Providing custom built solutions is our main area of expertise, each of our engineers has a minimum of 10 years experience in this field.

- Variations to existing product ranges
- One-off specials
- Retro-fit service
- Refurbishment of existing luminaires

We are able to attend site, assess the needs of the project and provide a timely and cost effective solution. In addition to this all custom built luminaires can be photometrically tested, CE marked and IP tested should the environment require this.

All projects will be undertaken using the latest technology in order to reduce the energy consumption of the installation whilst also considering the maintenance intervals of the luminaires and looking to minimise labour costs.

If you would like further information, or to arrange a site visit please do not hesitate to contact one of our engineers.

# HEDDON

Highly efficient recessed modular LED luminaire



## FEATURES

- Proven reliability with LG LEDs and Tridonic driver
- Suitable for 15 & 24mm exposed T ceilings
- Low maintenance - Exceptionally long life of 50,000 hours
- Robust steel body with polycarbonate diffuser panels
- Shallow recessing depth of only 41mm

## OPTIONS

- Dimmable control gear

D

## ORDERING

Ref	Colour Temp (K)	Lumen Output (lm)	System Power (tcW)	Luminaire Efficacy (lm/W)	Life (Hrs)
HED40	5000	3500	40	84	50,000

# PRUDHOE

Highly efficient recessed modular LED luminaire



## FEATURES

- Proven reliability with LG LEDs and Tridonic driver
- Suitable for 15 & 24mm exposed T ceilings
- Low maintenance - Exceptionally long life of 50,000 hours
- Robust steel body with central micro-prism controller and polycarbonate diffuser panels

## OPTIONS

- Dimmable control gear

D

## ORDERING

Ref	Colour Temp (K)	Lumen Output (lm)	System Power (tcW)	Luminaire Efficacy (lm/W)	Life (Hrs)
PRU44	5000	3700	44	79	50,000

# AMBLE

The Amble has been designed for TL5 technology. Choice of close fitting or dropped centre basket with either micro-lens or polished wedge louvre.



## FEATURES

- Lightweight steel body powder coated white
- Simple universal recessed installation
- Efficient enhanced aluminium Miro louvre or Micro-Lens
- Shallow appearance below ceiling

## OPTIONS

• High frequency dimming	D
• DALI	DALI
• Micro-Lens	ML
• Integral 3hr maintained emergency	E
• Remote presence detection/ daylink dimming	RD



## ORDERING

Ref	Wattage	Basket
AMB314/01	3 TL5 x 14w	Dropped
AMB324/01	3 TL5 x 24w	Dropped
AMB314/02	3 TL5 x 14w	Close
AMB324/02	3 TL5 x 24w	Close

# PONTELAND

Luminaires designed to provide performance and aesthetics using a central controller and diffuser panels.



## FEATURES

- Robust steel construction
- Backlighting to frosted diffuser panels to provide a large luminous area offering a pleasing appearance
- Requires void depth of only 120mm
- Suitable for both TL 5 and TC-L lamps
- LOR 72%



## OPTIONS

• High Frequency Dimming	D
• DALI	DALI
• Integral 3hr Maintained Emergency	E
• Remote Presence Detection/Daylink Dimming	RD



## ORDERING

Ref	Wattage	Basket
PON155/01	1 x 55w TC-L	Linear Prism Controller
PON180/01	1 x 80w TC-L	Linear Prism Controller
PON224/01	2 x 24w TL 5	Linear Prism Controller
PON155/02	1 x 55w TC-L	Louvre
PON180/02	1 x 80w TC-L	Louvre
PON224/02	2 x 24w TL 5	Louvre
PON155/03	1 x 55w TC-L	Micro-Prism
PON180/03	1 x 80w TC-L	Micro-Prism
PON224/03	2 x 24w TL 5	Micro-Prism



# BIRTLEY



## FEATURES

- Robust welded steel construction
- Suitable for TL5 lamps
- Simple and rapid installation
- Combines efficiency and aesthetically pleasing performance
- Shallow depth - 61mm

## OPTIONS

• High frequency dimming	D
• DALI	DALI
• Integral 3hr maintained emergency	E
• Remote presence detection/daylink dimming	RD

## ORDERING

Ref	Wattage	LOR
BIR314	3 x 14w TL 5	73.9%
BIR414	4 x 14w TL 5	72.8%

# DENWICK



## FEATURES

- Robust welded steel construction
- Suitable for TL5 and TC-L lamps
- Simple and rapid installation
- 1200mm versions available on request
- LOR 66%
- Combines efficiency and aesthetically pleasing performance

## OPTIONS

• High frequency dimming	D
• DALI	DALI
• Integral 3hr maintained emergency	E
• Integral presence detection/daylink dimming	I
• Remote presence detection/daylink dimming	RD

## ORDERING

Ref	Wattage	Attachment
DEN240	2 x 40w TC-L	Louvre
DEN255	2 x 55w TC-L	Louvre
DEN224	2 x 24w TL 5	Louvre
DEN314	3 x 14w TL 5	Louvre
DEN414	4 x 14w TL 5	Louvre

# FLEMING



## FEATURES

- Suitable for T-bar and plasterboard ceilings
- Precision optical system for high efficiency and excellent glare control
- Optical system manufactured from highly specular aluminium with photometrically calculated curved prismatic panel

## OPTIONS

• High Frequency Dimming	D
• DALI	DALI
• Integral 3hr Maintained Emergency	E
• Fixing kit for plasterboard ceilings	PB
• Remote presence detection/daylink dimming	RD

## ORDERING

Ref	Wattage
FLE414	4 x 14w TL 5

Other sizes and lamp configurations available on request

# WHALTON



## FEATURES

- Robust welded steel construction
- Suitable for a variety of lamp types and wattages
- Simple and rapid installation
- 1200mm versions available on request
- Providing both direct and indirect illumination for efficiency, low glare and pleasing appearance

## OPTIONS

• High Frequency Dimming	D
• DALI	DALI
• Integral 3hr Maintained Emergency	E
• Integral presence detection/daylink dimming (Only available on louvre attachment)	I
• Remote presence detection/daylink dimming	RD

## ORDERING

Ref	Wattage	Attachment
WHA240/01	2 x 40w TC-L	Louvre
WHA255/01	2 x 55w TC-L	Louvre
WHA224/01	2 x 24w TL 5	Louvre
WHA240/01	2 x 40w TC-L	Basket
WHA255/02	2 x 55w TC-L	Basket
WHA224/02	2 x 24w TL 5	Basket

# CRASTER

Dust excluding luminaires, sealed to IP65 designed for use in operating theatres, wards, clean rooms and pharmaceutical plants.







## FEATURES

- Robust steel canopy tested to IP65
- Canopy punched only with cable entry to prevent ingress of dust from void
- Removable front diffuser secured to body using captive fasteners
- Control gear mounted on removable gear tray for ease of maintenance
- Suitable for installation in Cat 3 laboratories
- Depth of only 70mm for ease of installation
- Surface mounted and cornice mounted versions available
- Custom built service available

## OPTIONS

• High Frequency Dimming	D
• DALI	DALI
• Integral 3hr Maintained Emergency	E
• Polycarbonate Controller	PC
• Separately Switched	SS
• Suitable for T bar ceiling	TB
• Surface Mounted	SM
• Cornice Mounted	COR
• Rear Access	RA

## ORDERING

Ref	Wattage	Dimensions
CRA314	3 x 14w TL 5	600 x 600
CRA414	4 x 14w TL 5	600 x 600
CRA328	3 x 28w TL 5	1200 x 600
CRA428	4 x 28w TL 5	1200 x 600
CRA228	2 x 28w TL 5	1200 x 300
CRA235	2 x 35w TL 5	1500 x 300

# WYLAM



Luminaires designed to provide performance and aesthetics using a central controller and diffuser panels.



## FEATURES

- Highly efficient LED Technology
- Suitable for recessing into T-bar ceilings
- Low maintenance – exceptionally long life of 50,000hrs
- 5000K cool white

## OPTIONS

• DALI or Touch and Dim	DALI
• Surface mounting kit	SK

## ORDERING

Ref	System Power (tcW)	Lumen output (lm)	Life (L70) hours
WYL40	40	3000	50,00
WYL50	50	4000	50,000

Bespoke sizes and outputs available, please contact our sales department to discuss your requirements.

# SANDYFORD



## FEATURES

- Surface mounting with CAT2 louvres
- Robust steel body
- White semi-gloss powder coated finish
- Semi-specular double parabolic aluminium louvre

## OPTIONS

- |                            |   |
|----------------------------|---|
| • 3hr Maintained Emergency | E |
| • High frequency dimming   | D |

## ORDERING

Ref	Lamp Wattage
SAN228	2 TL5 x 28w
SAN254	2 TL5 x 54w
SAN235	2 TL5 x 35w
SAN249	2 TL5 x 49w
SAN414	4 TL5 x 14w
SAN428	4 TL5 x 28w



# BRUNSWICK

Surface mounted LED luminaires



## FEATURES

- Spun aluminium base and twist on polycarbonate diffuser
- Choice of white or stainless steel base
- Low maintenance – Long life of 50,000hrs
- Integral maintained emergency available

## OPTIONS

• Integral 3hr Maintained Emergency	E
• Stainless Steel Base	SS
• Integral Microwave Presence Detector	MW

## ORDERING

Ref	BRU18	BRU24
Power (Luminaire tcW)	18	24
Lumen Output (lm)	1200	1550
Life (Hours)	50,000	50,000
Diameter (mm)	326	395
Height (mm)	98	113

# CHESTER

Adjustable LED display lighting.



## FEATURES

- Practical energy saving display lighting
- 6w Philips GU10 MasterLED lamp
- Choice of 2700K, 3000K or 4000K colour temperatures
- Integral mains dimming driver
- Choice of 25° or 40° beam
- Low maintenance - Exceptionally long life of 40,000 hours (L70)

## OPTIONS

• Brushed Aluminium Finish	BA
• 25° beam angle	NB
• 40° beam	WB

## ORDERING

Ref.	CHE6/27	CHE6/30	CHE6/40
Power (Luminaire tcW)	6w	6w	6w
Colour Temperature (K)	2700	3000	4000
Colour Rendering (Ra)	80	80	80
Lumen Output (lm)	300	320	320
Efficacy (luminaire lm/W)	50	54	54
Life (Hours)	40,000	40,000	40,000

# BEADNELL

Highly efficient recessed downlights using LED technology, providing extremely long life and low running costs.



## FEATURES

- Proven reliability with Philips control gear and LEDs
- Die-cast aluminium bezel
- Highly efficient - DLOR 95%
- Choice of 3000K or 4000K colour temperature
- Efficient cooling to ensure long life
- Low maintenance - Exceptionally long life of 50,000 hours

## OPTIONS

• DALI or Touch & Dim	DALI
• RGB Colour Change	RGB
• Tunable White from 2700K to 6500K	TW

## ORDERING

Ref.	BEA13LED/40	BEA23LED/40	BEA36LED/40
Power (Luminaire tcW)	12.6w	23.3w	36.6w
Colour Temperature (K)	4000	4000	4000
Colour Rendering (Ra)	80	80	80
Lumen Output (lm)	1100	2000	3000
Efficiency (DLOR)	95%	95%	95%
Efficacy (luminaire lm/W)	83	82	78
Life (Hours)	50,000	50,000	50,000



Chrome Bezel



Brushed Aluminium Bezel



White Anti-tamper Bezel



White Bezel Clear Dropped Glass



White Bezel Clear Halo Dropped Glass



White Bezel Etched Halo Dropped Glass



White Bezel Centre Etched Dropped Glass



White Bezel Blue Acrylic Halo



White Bezel Red Acrylic Halo



Etched Glass Mini Reflector



Blue Lens Mini Reflector



Red Lens Mini Reflector



Frosted Hi-light



Blue Hi-light



Blue Vertical Halo



Frosted Vertical Halo



IP54 Etched Glass



IP54 Clear Glass



IP54 Clear Polycarbonate



IP54 Opal Polycarbonate



IP54 Centre Etched Glass



IP54 Glass Scatter Dome



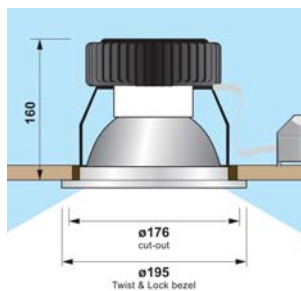
IP65 Clear Glass



IP65 Clear Polycarbonate



IP65 Opal Polycarbonate



Technical line drawing

# BLAGDON

Highly efficient surface mounted downlights using LED technology, providing extremely long life and low running costs.



## FEATURES

- Proven reliability with Philips control gear and LEDs
- Lightweight spun aluminium surface can with a range of accessories
- Highly efficient - DLOR 94%
- Choice of 3000K or 4000K colour temperature
- Efficient cooling to ensure long life
- Low maintenance - Exceptionally long life of 50,000 hours (L70)
- Colour combinations available on request



Blue Vertical Halo



Clear Glass



Centre Etched Glass



Fully Etched Glass



Opal Polycarbonate



Clear Polycarbonate



Glass Scatter Dome

## OPTIONS

- DALI or Touch & Dim

DALI

## ORDERING

Ref.	BLA13LED /30	BEA13LED /40	BEA26LED /30	BEA23LED /40	BEA39LED /30	BEA36LED /40
Power (Luminaire tcW)	13.9w	12.6w	25.6w	23w	39w	36.6
Colour Temperature (K)	3000	4000	3000	4000	3000	4000
Colour Rendering (Ra)	80	80	80	80	80	80
Lumen Output (lm)	1100	1100	2000	2000	3000	3000
Efficiency (DLOR)	94%	94%	94%	94%	94%	94%
Efficacy (luminaire lm/W)	74	82	73	81	72	77
Life (Hours)	50,000	50,000	50,000	50,000	50,000	50,000

# GOSFORTH

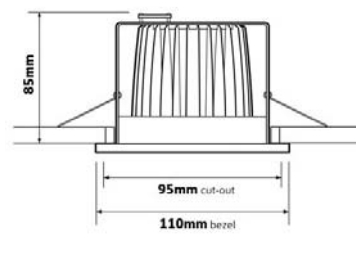


Highly efficient recessed downlights using LED technology, providing extremely long life and low running costs.



## FEATURES

- Proven reliability with Philips control gear and LEDs
- Die-cast aluminium bezel with interchangeable accessories
- Integrated driver and optic
- Choice of colour temperatures
- Efficient cooling to ensure long life
- Mains dimming (with suitable driver)
- Low maintenance - Exceptionally long life of 50,000 hours



Technical line drawing



Chrome Bezel



Brushed Aluminium Bezel



Blue Vertical Halo



Frosted Vertical Halo



Dropped Glass



Glass Scatter Dome



IP54 Etched Glass



Kick Reflector

## ORDERING

Ref	Colour Temp (K)	Lumen Output (lm)	System Power (tcW)	System Efficacy (lm/W)	Luminaire Efficacy (lm/W)	Life (Hrs)	Colour Rendering (Ra)
GOS13LED/27	2700	600	13	100%	46	50,000	80
GOS13LED/30	3000	640	13	100%	51	50,000	80
GOS13LED/40	4000	640	13	100%	51	50,000	80



# RYHOPE



## FEATURES

- Philips Fortimo SLM LED matched with Philips Xitanium drivers for optimum performance
- Low maintenance – Exceptionally long life of 50,000 hours (L70)
- DLOR 92%
- Weight of only 0.5kg
- Depth of only 99mm

## OPTIONS

- |                       |      |
|-----------------------|------|
| • Emergency           | E    |
| • DALI or Touch & Dim | DALI |



Chrome Bezel



Brushed Aluminium Bezel



White Bezel Clear Halo



White Bezel Opal Halo



Frosted Hi-light



Blue Hi-light



Blue Vertical Halo



Frosted Vertical Halo



IP54 Glass Scatter Dome



IP54 Clear Glass



IP54 Centre Etched Glass



IP54 Fully Etched Glass



Kick Reflector

## ORDERING

Ref	Colour Temp (K)	Module Output (lm)	System Power (tcW)	System Efficacy (lm/W)	Luminaire Efficacy (lm/W)
RYH11	3000	800	11.4	70	65
RYH9	4000	800	9.3	86	79
RYH16	3000	1100	16.0	69	63
RYH13	4000	1100	13.8	80	73
RYH22	3000	2000	22.0	91	84
RYH20	4000	2000	20.4	98	90
RYH32	3000	3000	32.6	92	85
RYH30	4000	3000	30.6	98	90

# RYHOPE GIMBAL



## FEATURES

- Die-cast fully adjustable gimbal with interchangeable accessories
- Philips Fortimo SLM LED matched with Philips Xitanium drivers for optimum performance
- Low maintenance – Exceptionally long life of 50,000 hours (L70)
- DLOR 92%
- Weight of only 0.5kg
- Depth of only 102mm

## OPTIONS

- |                       |      |
|-----------------------|------|
| • Emergency           | E    |
| • DALI or Touch & Dim | DALI |



Frosted Hi-light



Blue Hi-light



Blue Vertical Halo



Frosted Vertical Halo



IP54 Clear Glass



IP54 Centre Etched Glass



IP54 Fully Etched Glass

## ORDERING

Ref	Colour Temp (K)	Module Output (lm)	System Power (tcW)	System Efficacy (lm/W)	Luminaire Efficacy (lm/W)
RYH11/G	3000	800	11.4	70	65
RYH9/G	4000	800	9.3	86	79
RYH16/G	3000	1100	16.0	69	63
RYH13/G	4000	1100	13.8	80	73
RYH22/G	3000	2000	22.0	91	84
RYH20/G	4000	2000	20.4	98	90
RYH32/G	3000	3000	32.6	92	85
RYH30/G	4000	3000	30.6	98	90

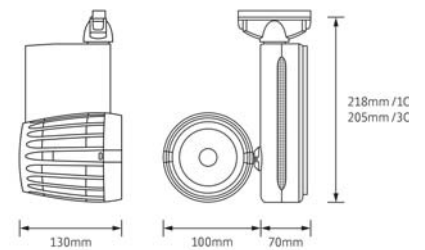
# OUSEBURN

High performance LED track luminaire, providing extremely long life and low running costs.



## FEATURES

- High performance LED track luminaire
- Philips Fortimo SLM LED module and Xitanium Driver
- Global Trac Adaptor
- Efficient cooling to ensure long life
- Low maintenance – exceptionally long life of 50,000hrs
- Ideal choice for retail, hospitality and leisure applications
- Highly efficient, upto 93% LOR



Technical line drawing

## OPTIONS

• 24° (narrow beam) reflector	NB
• 40° (medium beam) reflector	MB
• 60° (wide beam) reflector	WB
• Single circuit track adaptor	1C
• 3 circuit track adaptor	3C
• DALI or Touch and Dim	DALI
• Colour RAL 9016 – White	WH
• Colour RAL 9005 – Black	BL

## ORDERING

Ref	Lumen Output (lm)	Colour Temp (K)
OUS14/30	1100	3000
OUS13/40	1100	4000
OUS22/30	2000	3000
OUS20/40	2000	4000
OUS32/30	3000	3000
OUS30/40	3000	4000

# HALTWHISTLE

## FEATURES

- Fully adjustable LED track luminaire
- Integrated driver and optic
- Choice of colour temperatures and beam options
- Low maintenance – Exceptionally long life of 50,000hrs (L70)
- Single and 3 circuit track adaptors

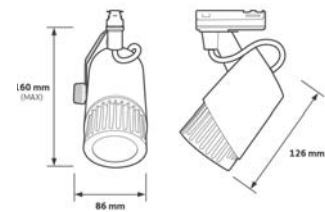


## OPTIONS

• 15° (narrow beam)	NB
• 24° (medium beam)	MB
• 36° (wide beam)	WB
• Single circuit track adaptor	1C
• 3 circuit track adaptor	3C

## ORDERING

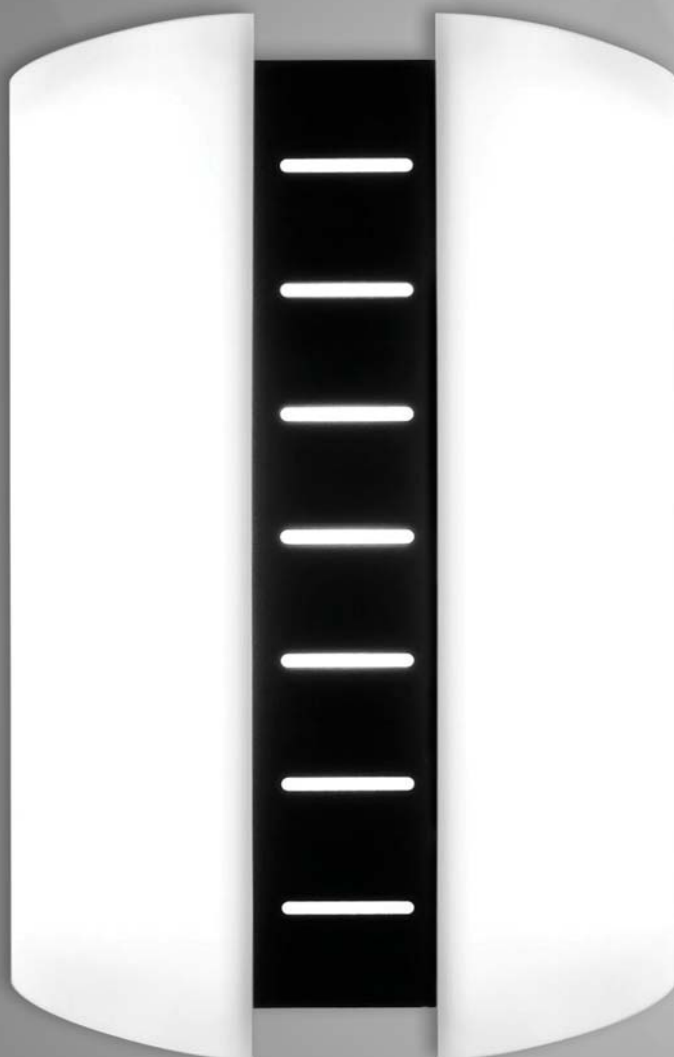
Ref	HAL13/27	HAL13/30	HAL13/40
<b>Colour Temp (K)</b>	2700	3000	4000
<b>Colour Rendering (Ra)</b>	80	80	80
<b>Life (L70) hours</b>	50,000	50,000	50,000
<b>Module Output (lm)</b>	600	640	640
<b>System Power (tcW)</b>	13	13	13
<b>System Efficacy (lm/W)</b>	46	51	51
<b>Luminaire LOR (%)</b>	100	100	100
<b>Luminaire Efficacy (lm/W)</b>	46	51	51



Technical line drawing

# WARKWORTH

Decorative LED wall light



## FEATURES

- Extruded acrylic diffuser
- Tridonic CLE LEDs and driver combination for optimum performance
- Exceptionally long life of 50,000hrs (L70)
- Upto 1800lm output

## ORDERING

Ref	Lumen Output (lm)	Colour Temp (K)	Driver Current (mA)	Power (luminaire tcW)
WAR13/30	1300	3000	350	13
WAR13/40	1350	4000	350	13
WAR18/30	1750	3000	500	18
WAR18/40	1800	4000	500	18

Personalised and bespoke decorative fascias available upon request

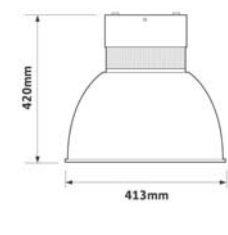


# ALNWICK



## FEATURES

- Incorporating the Philips Fortimo DLM and Xitanium Driver
- Polycarbonate Lexalite Reflexor refractor
- 2m suspension kit as standard, 5m option available
- Long life of 50,000hrs (L70)



Technical line drawing

## OPTIONS

- DALI or Touch & Dim

DALI

- 5m fixed output suspension kit

5m

## ORDERING

Ref	ALN14	ALN12	ALN26	ALN24	ALN39	ALN37
Colour Temp (K)	3000	4000	3000	4000	3000	4000
Colour Rendering (Ra)	80	80	80	80	80	80
Life (L70) hours	50,000	50,000	50,000	50,000	50,000	50,000
Module Output (lm)	1100	1100	2000	2000	3000	3000
System Power (tcW)	13.9	12.6	25.6	23.3	39.0	36.6
System Efficacy (lm/W)	79	87	78	86	77	82
Luminaire LOR (%)	>95	>95	>95	>95	>95	>95
Luminaire Efficacy (lm/W)	75	83	74	82	73	78

# MORPETH

Recessed LED panel



## FEATURES

- Suitable for fitting into ceiling tiles or plasterboard ceiling using the integral fixing springs
- 13w LED, 1280 lumens
- 4300K cool white
- Low maintenance - Exceptionally long life of 50,000 hours
- 240mm diameter, 25mm depth

## OPTIONS

- 3hr Maintained Emergency

E

## ORDERING

Ref	MOR13
Power (Luminaire tcW)	13w
Colour Temperature (K)	4300
Colour Rendering (Ra)	80
Lumen Output (lm)	1280
Life (Hours)	50,000

# HETTON



## FEATURES

- Lexalite Reflexor refractor giving an efficacy in excess of 90%
- 2m adjustable suspension system
- Ballast life of up to 100,000hrs
- Lamp life of up to 24,000hrs
- Integral control gear

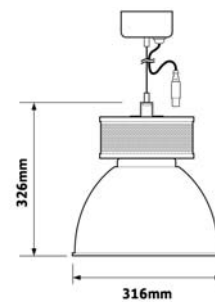
## OPTIONS

- High frequency dimming

D

## ORDERING

Ref	Lamp Type
HET126	1 x 26w PL-C or PL-T
HET132	1 x 32w PL-T
HET142	1 x 42w PL-T
HET157	1 x 57w PL-T
HET226	2 x 26w PL-C or PL-T
HET232	2 x 32w PL-T
HET242	2 x 42w PL-T



Technical line drawing

# WESTERHOPE



## FEATURES

- Ideal for high mounting applications such as sports halls, warehouses and factories
- Integral 3hr maintained emergency available enabling specification where traditional high-pressure discharge lobays do not have a solution
- Optional wire guard and polycarbonate diffuser to provide additional protection
- Independent switching available to provide energy savings
- 6 lamp versions available

## OPTIONS

• High Frequency Dimming	D
• DALI	DALI
• Integral 3hr Maintained Emergency	E
• Wire Guard	WG
• Clear Polycarbonate Diffuser	PC
• Separate Switching	SEP
• Intelligent sensor	IS

## ORDERING

Ref	Wattage	Length
WES435	4 x 35w TL5	1500
WES449	4 x 49w TL5	1500
WES454	4 x 54w TL5	1200
WES480	4 x 80w TL5	1500

# HEBBURN



## FEATURES

- IP65
- Corrosion resistant
- Removable high frequency gear tray
- Optional vandal resistant stainless steel diffuser clips
- Standard LED packages use the Philips MASTER LEDtube
- Custom LED wattages/ lumen packages built to order

## OPTIONS

• High Frequency Dimming	D
• DALI	DALI
• Integral Microwave Presence Detector	MW
• Integral 3hr Maintained Emergency	E
• Stainless Steel Vandal Resistant Clips	SS

## ORDERING

Ref	Wattage	Length (mm)
HEB128	1 x 28w TL5	1200
HEB154	1 x 54w TL5	1200
HEB135	1 x 35w TL5	1500
HEB149	1 x 49w TL5	1500
HEB25LED	1 x 25w LED	1500
HEB34LED	1 x 34w LED	1500
HEB228	2 x 28w TL5	1200
HEB254	2 x 54w TL5	1200
HEB235	2 x 35w TL5	1500
HEB249	2 x 49w TL5	1500
HEB225LED	2 x 25w LED	1500
HEB234LED	2 x 34w LED	1500



# FELLING



## FEATURES

- IP54
- IK10, Vandal resistant design
- Clear reeded polycarbonate dish diffuser
- Stainless Steel Security Screws
- Long life LED options available



## OPTIONS

• High Frequency Dimming	/D
• DALI	/DALI
• Integral 3hr maintained emergency	/E
• Integral Microwave Presence Detector	/MW
• Cornice Mounted Version	/COR
• Slim Body Version	/SLIM

## ORDERING

Ref	Wattage	Length (mm)
FEL128	1 x 28w TL5	1250
FEL135	1 x 35w TL5	1550
FEL149	1 x 49w TL5	1550
FEL154	1 x 54w TL5	1250
FEL228	2 x 28w TL5	1250
FEL235	2 x 35w TL5	1550
FEL249	2 x 49w TL5	1550
FEL254	2 x 54w TL5	1250

# MONKSEATON



## FEATURES

- IP44
- Prismatic polycarbonate controller
- Removable high frequency gear tray for ease of maintenance
- Vandal resistant design

## OPTIONS

• High Frequency Dimming	D
• DALI	DALI
• Integral 3hr Maintained Emergency	E
• Night Light	NL

## ORDERING

Ref	Wattage	Length (mm)
MON128	1 x 28w TL 5	1200
MON154	1 x 54w TL 5	1200
MON135	1 x 35w TL 5	1500
MON149	1 x 49w TL 5	1500
MON228	2 x 28w TL 5	1200
MON254	2 x 54w TL 5	1200
MON235	2 x 35w TL 5	1500
MON249	2 x 49w TL 5	1500

# HOLYWELL



## FEATURES

- IP44
- Prismatic polycarbonate controller
- Removable high frequency gear tray for ease of maintenance
- Vandal resistant design
- Stainless steel security screws
- Cornice mounted version available

## OPTIONS

• High Frequency Dimming	D
• DALI	DALI
• Integral 3hr Maintained Emergency	E
• Night Light	NL
• Cornice Mounted Version	COR

## ORDERING

Ref	Wattage	Length (mm)
HOL128	1 x 28w TL 5	1200
HOL154	1 x 54w TL 5	1200
HOL135	1 x 35w TL 5	1500
HOL149	1 x 49w TL 5	1500
HOL228	2 x 28w TL 5	1200
HOL254	2 x 54w TL 5	1200
HOL235	2 x 35w TL 5	1500
HOL249	2 x 49w TL 5	1500



# GRAINGER



## FEATURES

- Surface mounting
- Steel body
- White gloss powder coated finish

## OPTIONS

- |                            |   |
|----------------------------|---|
| • 3hr Maintained Emergency | E |
| • High Frequency Dimming   | D |

## ORDERING

Ref	Lamp Wattage
GRA135	1 TL5 x 35w
GRA149	1 TL5 x 49w
GRA154	1 TL5 x 54w
GRA228	2 TL5 x 28w
GRA235	2 TL5 x 35w
GRA249	2 TL5 x 49w

# JESMOND

## LED Street Lantern



### OPTIONS

• Narrow Beam	NB
• Medium Beam	MB
• Wide Beam	WB

### FEATURES

- Low maintenance - Exceptionally long life of 120,000 hours
- Future proof, change over optical assemblies in-situ
- IP66
- Post top and side entry as standard
- Weight only 6.8kg

### ORDERING

Ref	Power (Luminaire tcW)	Colour Temperature (K)	Efficiency (%)	LED quantity
JES14	14	6000	88	6
JES22	22	6000	88	6
JES26	26	6000	88	6
JES30	30	6000	88	6
JES45	45	6000	88	9
JES59	59	6000	88	12

# HOUGHTON

IP65 LED Floodlights



## FEATURES

- Symmetric light distribution
- Integral driver
- Extruded aluminium body and toughened glass

## ORDERING

Ref	CRI	Luminous flux at 8m (lm)	Weight (kg)
HOU10	>60	660	0.51
HOU30	>60	1980	2.5
HOU50	>60	3300	4.6



## FEATURES

- Symmetric light distribution
- Integral driver
- Extruded aluminium body with die cast end caps and toughened glass

## ORDERING

Ref	CRI	Luminous flux at 8m (lm)	Weight (kg)
HOU70	>60	3500	7.4
HOU140	>60	7000	11.2

# PELAW



## FEATURES

- Surface mounted anti-ligature luminaire
- Robust aluminium body
- Suitable for a variety of lamp types and wattages
- Stainless steel security screws
- LED options providing energy savings and reduced maintenance

## OPTIONS

• Prismatic Diffuser	P
• Opal Diffuser	O
• Integral 3hr maintained emergency	E
• Night Light	NL
• High Frequency Dimming	D
• DALI	DALI
• Integral microwave detection	MW

## ORDERING

Ref	Lamp Wattage	Nominal Diameter (mm)
PEL28	1 x 28w 2D	410
PEL38	1 x 38w 2D	410
PEL218	2 x 18w TC-DEL	410
PEL226	2 x 26w TC-DEL	410
PEL13L	13w LED (1350lm)	410
PEL18L	18w LED (1800lm)	410
PEL140	1 x 40w T16R	520
PEL155	1 x 55w T16R	520

# PELAW SEMI RECESSED



## ORDERING

Ref	Lamp Wattage
PEL28SR	1 x 28w 2D
PEL38SR	1 x 38w 2D
PEL218SR	2 x 18w TC-DEL
PEL226SR	2 x 26w TC-DEL
PEL13LSR	13w LED (1350lm)
PEL18LSR	18w LED (1800lm)

# BLYTH



## FEATURES

- Robust aluminium body
- Opal or prismatic polycarbonate diffuser
- Suitable for a variety of lamp types and wattages
- Shallow appearance

## OPTIONS

• Prismatic Diffuser	P
• Integral 3hr maintained emergency	E
• Remote 3hr maintained emergency	RE
• Integral microwave presence detection	MW
• Remote presence detection/daylink dimming	RD
• High Frequency Dimming	D
• DALI	DALI

## ORDERING

Ref.	Lamp Wattage
BLY28	28w 2D
BLY38	38w 2D
BLY218	2 x 18w TC-L
BLY224	2 x 24w TC-L
BLY324	3 x 24w TC-L



# ROTHBURY



## FEATURES

- Wall mounted luminaire
- Optional exit legend

## OPTIONS

• Integral 3hr maintained emergency	E
• Exit Legend	L
• High Frequency Dimming	D
• DALI	DALI
• Silver Grey Finish	SG

## ORDERING

Ref	Wattage
ROT14	1 x 14w TL 5
ROT36	1 x 36w TC-L

Dimensions: 610mm length x 200mm width x 105mm depth

# EMERGENCY



## FEATURES

- IP65 vandal resistant polycarbonate base and Fresnel lens
- Long life LEDs, 50,000hrs
- Maintenance free operation
- Suitable for use in cold stores (ambient temperatures down to -20degrees C)
- Low energy (<10 Watts operation)
- Fully compliant with EN60598.2.22

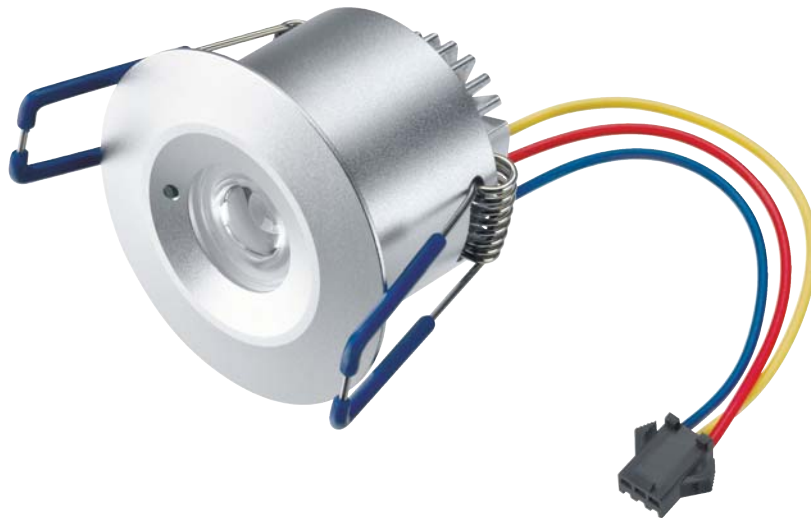
## OPTIONS

- |                                   |     |
|-----------------------------------|-----|
| • Double-sided Exit Sign Diffuser | DS  |
| • Self Adhesive Legend Kit        | LEG |

## ORDERING

<b>Ref</b>	EM/LED/M3
<b>Lamp Source</b>	16 x white LED
<b>Emergency Operation</b>	3hr maintained

# EMERGENCY



## FEATURES

- Long life LEDs (50,000hrs)
- Maintenance-free operation
- Low energy
- White finish as standard
- Corridor version available for increased spacings

## OPTIONS

• Silver Finish	S
• Corridor Version	COR



## ORDERING

Ref.	Lamp Source	Emergency Operation
LED3/M3	3w LED	3hr maintained

## EMERGENCY LIGHTING SPACINGS

Mounting height (m)	LED3/M3 min 0.5lux open area	LED3/M3 min 1lux escape	LED3/M3/COR min 0.5lux open area	LED3/M3/COR min 1 lux escape
2.0	6.3m	5.1m	n/a	10.0
2.5	6.9m	5.9m	n/a	10.8
3.0	7.2m	6.6m	n/a	11.9

# WANSBECK

Surface mounted LED luminaires



## FEATURES

- White polycarbonate base and opal polycarbonate diffuser
- Sealed to IP65
- Low maintenance – Long life of 50,000hrs
- Removable gear tray for ease of maintenance

## OPTIONS

• Integral 3hr Maintained Emergency	E
• Integral Microwave Presence Detector	MW

## ORDERING

Ref	WAN17
Power (Luminaire tcW)	17
Lumen Output (lm)	1150
Life (Hours)	50,000
Diameter (mm)	330
Height (mm)	126



ENVIROLUX

UNIT 54B  
SOUTH NELSON INDUSTRIAL ESTATE  
CRAMLINGTON  
NORTHUMBERLAND  
NE23 1WF

[WWW.ENVIROLUX-LIGHTING.CO.UK](http://WWW.ENVIROLUX-LIGHTING.CO.UK)

01670 730 001

[SALES@ENVIROLUX-LIGHTING.CO.UK](mailto:SALES@ENVIROLUX-LIGHTING.CO.UK)