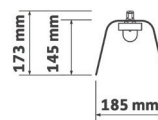
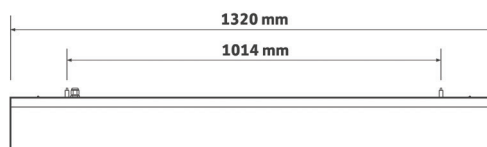
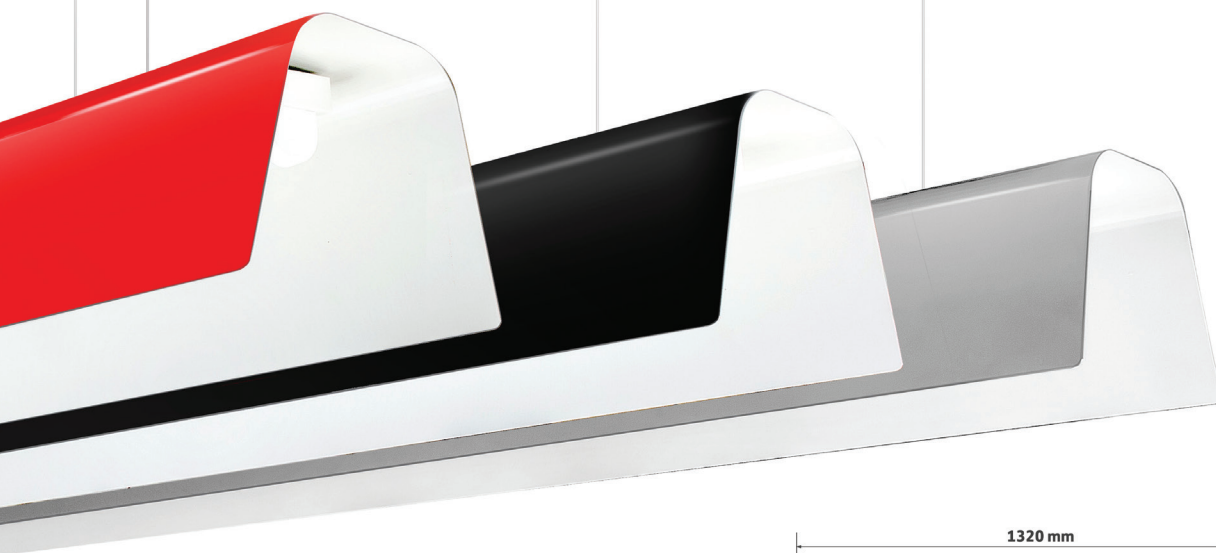


STANLEY

Decorative linear LED pendant luminaires



FEATURES

- Aluminium pendant
- Utilising Tridonic LED and driver combination
- Available in 3 colours, red gloss, grey satin & black satin
- Supplied with 2m adjustable suspensions
- Bespoke paint finishes available

OPTIONS

- | | |
|---------------|---|
| • Red gloss | R |
| • Grey satin | G |
| • Black satin | B |
| • DALI | D |

ORDERING

Ref	Luminaire output (lm)	Power (W)	Colour
STA13/30	1500	13	3000K
STA14/40	1500	13	4000K